

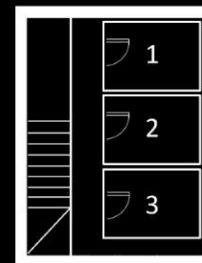


BASEMENT

63



The passages through dimensionality explore the juxtaposition between surface and space through an exhibit of video, sculpture and projection. Together, the artist and curator ask 'can image become a space?'. Through moulding the two- dimensional with the three- dimensional, image is spatially elongated by two collaged projections placed either side of the structure. Each fragment of exposed surface is flooded with colour and light, making image a structural medium.



Unfortunately, there is no disabled access at the gallery.

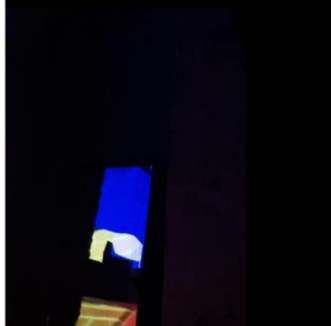
ROOM 1 ^



ROOM 2

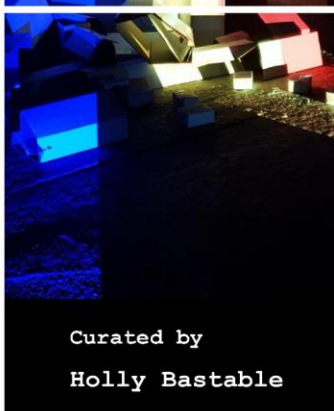


ROOM 3 >



FREE ENTRY

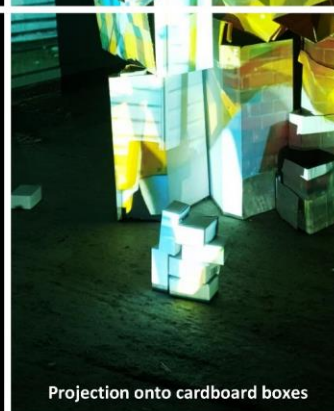
Please turn over for more information



Curated by
Holly Bastable



By choreographing the light, we design the focus and distil the most aesthetical fragments of time to achieve the elevation of this unassuming material. Each room has one lyrically intertwined structure via the idea of pictorial space.



Projection onto cardboard boxes

FOLLOW US



[www.basement63.wixsite.com/
exhibitions](http://www.basement63.wixsite.com/exhibitions)



@basement.63



Basement_63@hotmail.com

BASEMENT
63

This exhibition contains flashing lights and bright colours, if you have any concerns or queries prior to visiting, please email us at Basement_63@hotmail.co.uk

IMAGE SHIFT

Jan-Mar 2019

By exploring the relationship between light and materiality, through choreographing video and object, together the team formed a series of colour sensitive installations. They expand on the notion of 'image' into a physical form by taking this mundane, unassuming material and sculpting it into a singular totality within each room of the gallery.

Visiting Us:

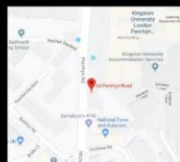
If you would like to visit any of our exhibitions please email Basement_63@hotmail.com for visitor information and to book a free viewing appointment, or to attend one of our private views.

Alternatively, visit our website to view all the exhibition films and photographs.

How To Get Here:

Address:

63 Penrhyn Road, Kingston
Upon Thames, KT1 2EQ



By Train

Our nearest train station is Surbiton Station which is a 15-minute walk from our main entrance. Alternatively, Kingston Station is a 20-minute walk away.

By Bus

Our nearest bus stop is Kingston University, County Hall.

By Car

We have very limited parking at the gallery, please email us to reserve a parking space.

'Sculpting image through light to revive the exposed surface...'

- Curator, Holly Bastable