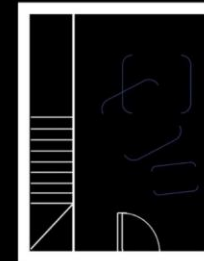
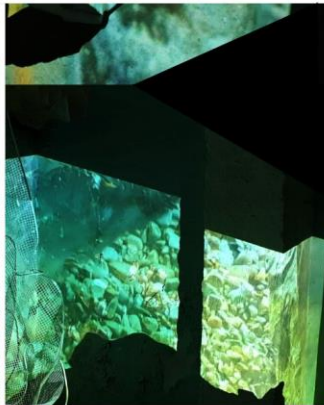


# BASEMENT 63

The passages through crackled depths, explore the organic scenery described in the poem "You, Andrew Marvell" by Archibald MacLeish. A concaved substance is formed between the surface and space through an exhibit of video, sculpture and projection. Together, the artists and curator conceptualised the literature of 'weathered travels' and 'earthy chills' into a structural and spatial medium.



Unfortunately, there is no disabled access at the gallery.



In collaboration with:  
  
Rachel Atkinson  
Madeleine Jones



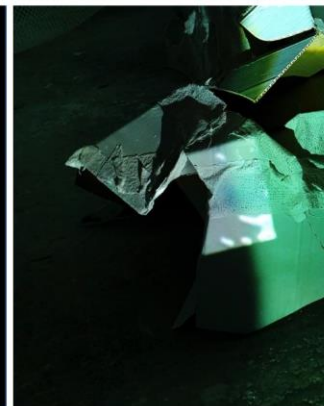
**FREE ENTRY**

Please turn over for more information

Curated by  
**Holly Bastable**

This exhibit explores the idea of time and memory, through how an event and the recordings of such event mutate from one another. The artists and curator illustrate their own memories of weathered landscapes and intertwine them with film recordings of familiar seascapes, to demonstrate this adapting process.

Projection onto cardboard, Modroc, mesh and chiffon.



**FOLLOW US**



[www.basement63.wixsite.com/exhibitions](http://www.basement63.wixsite.com/exhibitions)



@basement.63



Basement\_63@hotmail.com



BASEMENT  
63

*Time, In Time, Motion, In Motion* consists of multiple concaved floor sculptures intertwined with mesh woven hangings, both designed by Atkinson. The projections illustrate Jones' painterly take on her hometown seaside to convey the poet's description of 'the long light on the sea'. Both the artists and curator designed an environment to encapsulate the 'ruined stone' and 'withered grass' described by MacLeish.

TIME,  
IN TIME,  
MOTION,  
IN MOTION

Sep-  
Oct  
2019

BASEMENT  
63

This exhibition contains flashing lights and bright colours, if you have any concerns or queries prior to visiting, please email us at [Basement\\_63@hotmail.co.uk](mailto:Basement_63@hotmail.co.uk)

### Visiting Us:

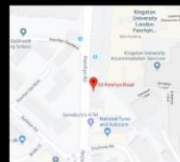
If you would like to visit any of our exhibitions please email [Basement\\_63@hotmail.com](mailto:Basement_63@hotmail.com) for visitor information and to book a free viewing appointment, or to attend one of our private views.

Alternatively, visit our website to view all the exhibition films and photographs.

### How To Get Here:

#### Address:

63 Penrhyn Road, Kingston  
Upon Thames, KT1 2EQ



#### By Train

Our nearest train station is Surbiton Station which is a 15-minute walk from our main entrance. Alternatively, Kingston Station is a 20-minute walk away.

#### By Bus

Our nearest bus stop is Kingston University, County Hall.

#### By Car

We have very limited parking at the gallery, please email us to reserve a parking space.

*'To feel creep up the curving east  
The early chill of dust and slow  
Upon those under lands the vast  
And ever climbing shadow grow'*

- "You, Andrew Marvell" by  
Archiband MacLeish