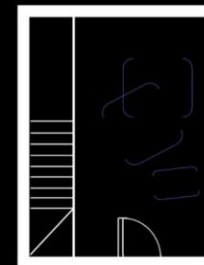


BASEMENT

63

Atkinson explores 'the fantastical failures in illusion' through this multimedia installation playing with the ideas of old silent cinema. The performative film interlinked with the physical props, create a playful and ironic take on 'the illusion', incorporating a sculptural play on its modern green screen form.



Unfortunately, there is no disabled access at the gallery.

Rachel
Atkinson



RAZZLE-DAZZLE opens up the wider discussion about 'expectations', 'tricksters' and 'what is enough?' through a light and humorous environment, tackling both past and present illusions. Atkinson aims for this exhibit to sculpt a dialogue about 'what it is to be tricked' in the visual world. By incorporating strange performative acts of dance/mime, the exhibit creates an unusual conflict with the viewer's expectations of theatre.



FREE ENTRY

Please turn over for more information

Curated by
Holly Bastable



FOLLOW US



[www.basement63.wixsite.com/
exhibitions](http://www.basement63.wixsite.com/exhibitions)



@basement.63



Basement_63@hotmail.com

BASEMENT
63



Atkinson's installation consists of fabric sculptured forms displaying the tracking symbol used in green screen practice. The film *Every Trick in The Box* (2020) features the artist in a humorous performance, which is projected upon a screen, shaped by velvet green curtains. Atkinson's performance mimics the traditional body language of theatrical choreography including 'jazz hands' and magic gestures.



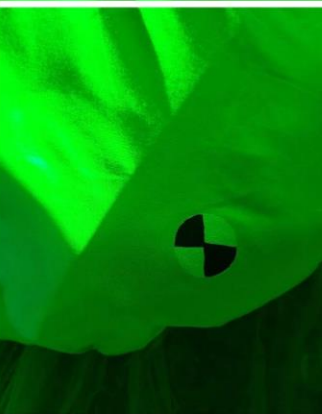
RAZZLE-DAZZLE

2nd-8th March 2020

Rachel Atkinson



This exhibition contains flashing lights and bright colours, if you have any concerns or queries prior to visiting, please email us at Basement_63@hotmail.co.uk



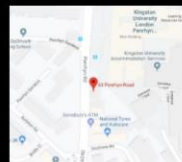
Visiting Us:

If you would like to visit any of our exhibitions please email Basement_63@hotmail.com for visitor information and to book a free viewing appointment, or to attend one of our private views.

Alternatively, visit our website to view all the exhibition films and photographs.

How To Get Here:

Address:
63 Penrhyn Road, Kingston
Upon Thames, KT1 2EQ



By Train

Our nearest train station is Surbiton Station which is a 15-minute walk from our main entrance. Alternatively, Kingston Station is a 20-minute walk away.

By Bus

Our nearest bus stop is Kingston University, County Hall.

By Car

We have very limited parking at the gallery, please email us to reserve a parking space.



'...the ideas clash and in doing so create a playfully ironic take on the illusion.'

- Rachel Atkinson